



15th February, 2016

To,
BSE Limited.,
Corporate Relationship Department
Listing Department
Phiroze Jeejeebhoy Towers,
Dalal Street,
Mumbai - 400 001
Facsimile No. 22723121/22722037/2041
Scrip Code: 532848

Dear Sirs,

Sub: Intimation under Regulation 30 of SEBI (Listing Obligations and Disclosure Requirements) Regulations, 2015.

Pursuant to Regulation 30 of the SEBI (Listing Obligations and Disclosure Requirements), Regulations, 2015, this is to inform you that the Schedule of Institutional Investor meet is as follows:-

Date	Particulars	Type of Meeting/Location
16.02.2016	Edelweiss India Conference	Investor Conference, Mumbai

The aforesaid Schedule and presentation is available on the website of the Company.

You are requested to take the same on record & oblige.

Thanking You.

Yours Sincerely,

For Delta Corp Limited


Hardik Dhebar
Chief Financial Officer

Regd. Office : 10, Kumar Place, 2408, General Thimayya Road, Pune - 411001.

Bayside Mall, 2nd Floor, Tardeo Road, Haji Ali,
Mumbai - 400 034.
URL : www.deltacorp.in

Phone : +91 22 4079 4700
Fax : +91 22 4079 4777
Email : secretarial@deltin.com
CIN : L65493PN1990PLC058817

DELTA CORP LIMITED

15th February, 2016

To,

Listing Department.
National Stock Exchange of India Ltd.
Exchange Plaza, C-1, Block- G,
Bandra Kurla Complex,
Bandra (East) Mumbai-400 051.
Fax No. 26598235/8237/8347.
Symbol: DELTACORP

Dear Sirs,

Sub: Intimation under Regulation 30 of SEBI (Listing Obligations and Disclosure Requirements) Regulations, 2015.

Pursuant to Regulation 30 of the SEBI (Listing Obligations and Disclosure Requirements), Regulations, 2015, this is to inform you that the Schedule of Institutional Investor meet is as follows:-

Date	Particulars	Type of Meeting/Location
16.02.2016	Edelweiss India Conference	Investor Conference, Mumbai

The aforesaid Schedule and presentation is available on the website of the Company.

You are requested to take the same on record & oblige.

Thanking You.

Yours Sincerely,

For Delta Corp Limited


fw **Hardik Dhebar**
Chief Financial Officer

Regd. Office : 10, Kumar Place, 2408, General Thimayya Road, Pune – 411001.

Bayside Mall, 2nd Floor,
Tardeo Road, Haji Ali,
Mumbai - 400 034.
URL : www.deltacorp.in

Phone : +91 22 4079 4700
Fax : +91 22 4079 4777
Email : secretarial@deltin.com
CIN : L65493PN1990PLC058817



DISCOVER
DELTIN

 **DELTA** *CORP LIMITED*

OVERVIEW

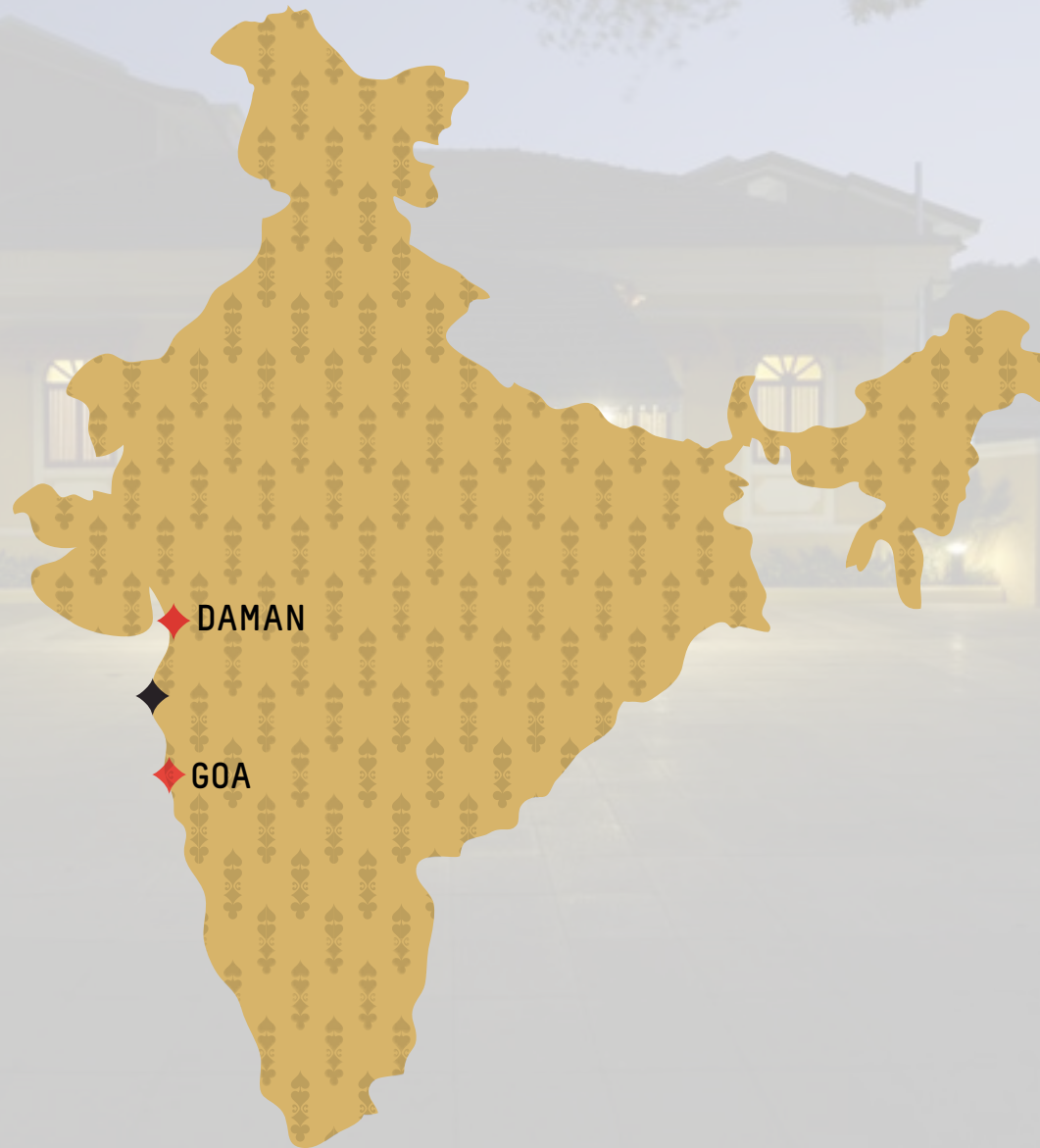


- 
- ◆ **Primary business of gaming & hospitality**
 - ◆ **Leading gaming company in India,** with 3 of 6 live gaming licenses in Goa and currently offering 1,500 gaming positions over 200 live gaming tables.
 - ◆ **First mover advantage** in India.
 - ◆ **Launched the first integrated Casino resort in Daman,** just a 2.5 hour drive from Mumbai (population 12.5M). Well connected to Surat, Vadodara and Ahmedabad, 3 large affluent cities in Gujarat (population 11.8M).

- ◆ Listed on the National Stock Exchange and Bombay Stock Exchange with a market capitalization of ~US\$ 222Mn. (as of Feb 2016)
- ◆ Quality management team with significant operating expertise. Delta's Chairman, **Mr. Jaydev Mody**, is a first generation entrepreneur and a leading Indian real-estate visionary.



DELTA *CORP LIMITED* has secured the most attractive locations in India.



CORPORATE HISTORY



◆ 2006-2007

- ◆ Entered the Gaming and Hospitality business.

◆ 2008-2010

- ◆ Demerged Textile business.
- ◆ Commenced operation of 2 offshore casinos, Casino Royale and King's Casino.
- ◆ Raised ₹82.5 crores through the QIP route, a first for Delta Corp.

◆ 2013-2014

- ◆ Commenced operations of Daman Hotel
- ◆ Made a profitable exit from the Real Estate business
- ◆ Launched Asia's largest offshore Casino in Goa

◆ 2014-2015

- ◆ Launched Landbased casino in Goa

◆ 1990-1991

- ◆ Started as a Textiles and Real Estate consultancy company.

◆ 2007-2008

- ◆ Entered the Real Estate business in Nairobi, East Africa.
- ◆ ICICI Ventures invested ₹82 crores, a major private equity deal for Delta Corp.

◆ 2010-2012

- ◆ Acquired third offshore casino, Casino Caravela.
- ◆ Became India's largest gaming company.
- ◆ Raised ₹285 crores through preferential allotment to Rakesh Jhunjhunwala & Group.

◆ 2012-2013

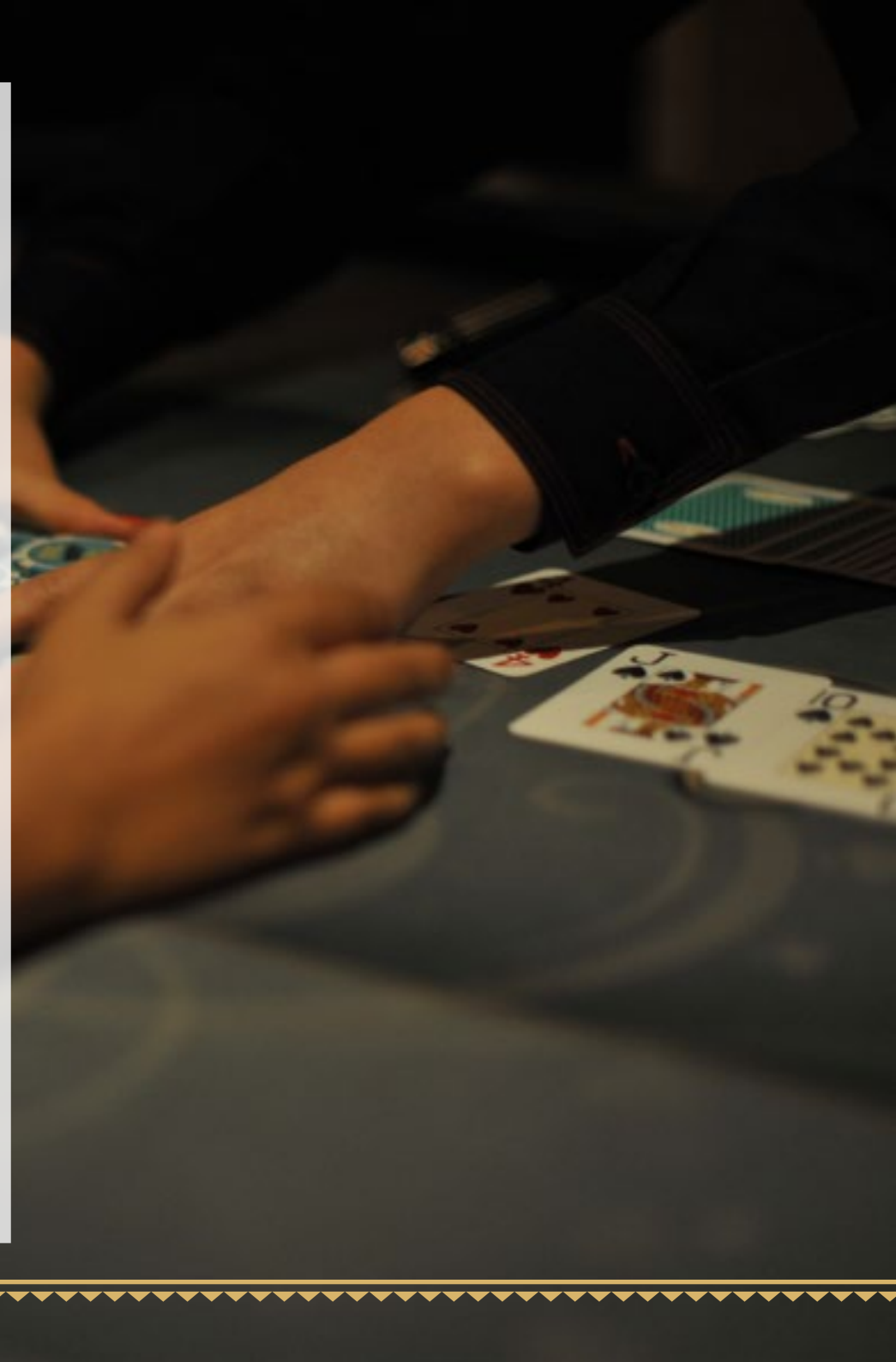
- ◆ Acquired an additional 36% stake in Daman Hospitality; increasing our stake to 87%.
- ◆ Acquired land in Sri Lanka.
- ◆ Acquired 51% stake in Interactive Gaming and Sports Pty Ltd.



KEY HIGHLIGHTS



- ◆ India represents a gaming market with **high growth potential**.
- ◆ Delta Corp is the **largest operator in the organised gaming market in India**, and the only listed operator with access to capital markets.
- ◆ Delta has an early mover advantage.
- ◆ Delta has a high quality management team with **significant operating expertise**.



Rebranding to DELTIN

- ◆ Rebranded gaming and hospitality businesses under an umbrella brand
- ◆ India's first INTEGRATED GAMING AND HOSPITALITY BRAND
- ◆ Reflects a bigger, better and more opulent experience across all the casinos and hotels of Delta Corp





DELTIN JAQK

CASINO · PANJIM · GOA



OVERVIEW

- ◆ Live offshore gaming casino with 4 operational decks.
- ◆ Gaming area spread across ~13,000 sq. ft.
- ◆ Commenced operations in 2008.

GAMING FACILITIES

- ◆ Offering 500+ live gaming positions across gaming tables and slot machines.
- ◆ Dedicated Dining & Entertainment floor.
- ◆ Exclusive VIP and VVIP gaming rooms for high rollers.





DELTIN CARAVELA

CASINO · PANJIM · GOA



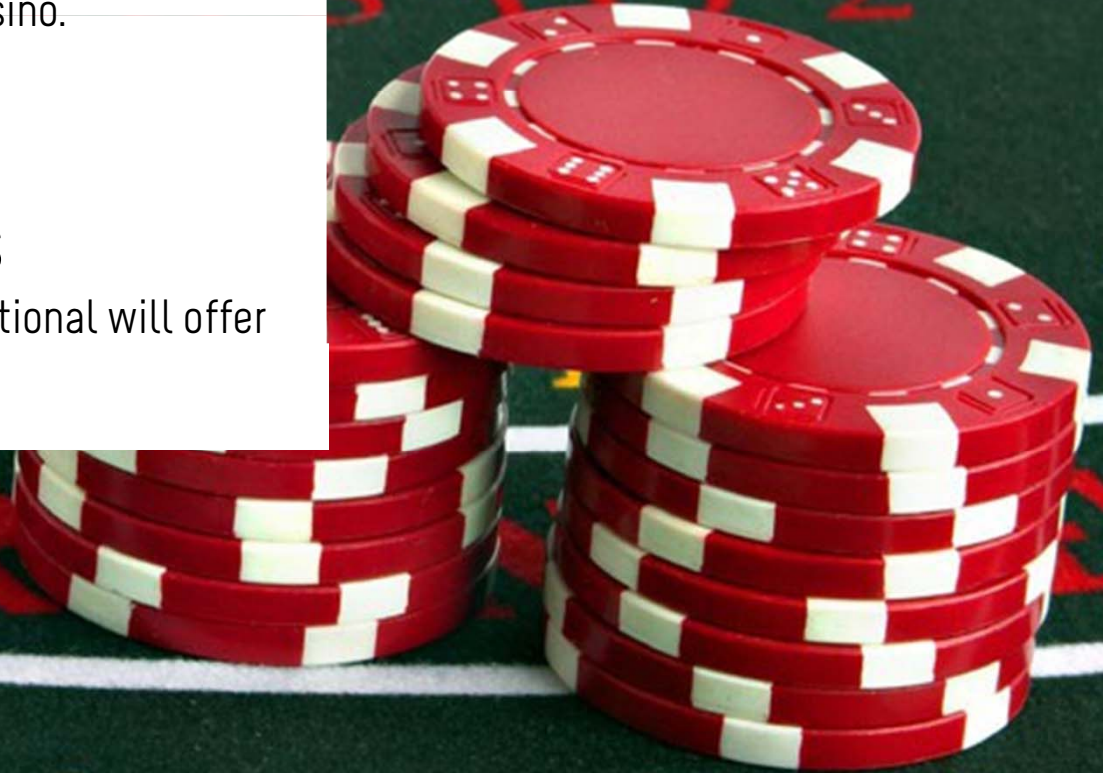
♥ ♦ ♦ ♦ ALL SUITE LUXURY FLOATING HOTEL & CASINO ♦ ♦ ♦ ♥

OVERVIEW

- ◆ India's first offshore live casino.
- ◆ Started operations in 2000.

GAMING FACILITIES

- ◆ Deltin Caravela, once operational will offer 200 gaming positions





DELTINROYALE

CASINO · PANJIM · GOA



OVERVIEW

- ◆ Purchased vessel M.V. Horseshoe Casino from Caesar's Entertainment Corporation and refurbished in India.
- ◆ Asia's Largest offshore casino vessel.
- ◆ Positioned as a premium casino to attract higher visitations and to cater to multiple segments of the market.

GAMING FACILITIES

- ◆ ~1000 live gaming positions across 123 live gaming tables, 65 slots machines and dedicated rooms for Indian Flush.
- ◆ Over 35,000 sq. ft. of gaming area spread across 4 levels.
- ◆ India's largest Poker Room.



HOTEL, F&B & OTHER FACILITIES

- ◆ Exclusive VVIP and VIP gaming suites for high rollers.
- ◆ 10,000 sq. ft. solely dedicated to Dining & Entertainment.
- ◆ Live kitchens onboard.
- ◆ Vegas multi-cuisine restaurant.
- ◆ Whiskys bar lounge serves premium whiskey and single malts.





DELTIN SUITES

HOTEL · NERUL · GOA



A modern hotel room interior featuring a dark wood dining table with four light-colored upholstered chairs. A centerpiece of white flowers sits on the table. To the left, a glass-paned door provides a view into a bathroom with a sink and a bedroom with a bed. The room has light yellow walls, a white ceiling with recessed lighting, and a dark wood headboard. A small table with a tray of fruit is visible in the background.

♥♦♦♦ A 106 ROOM HOTEL & CASINO ♦♦♦♥



DELTA PALMS

HOTEL · BRITTONA · GOA



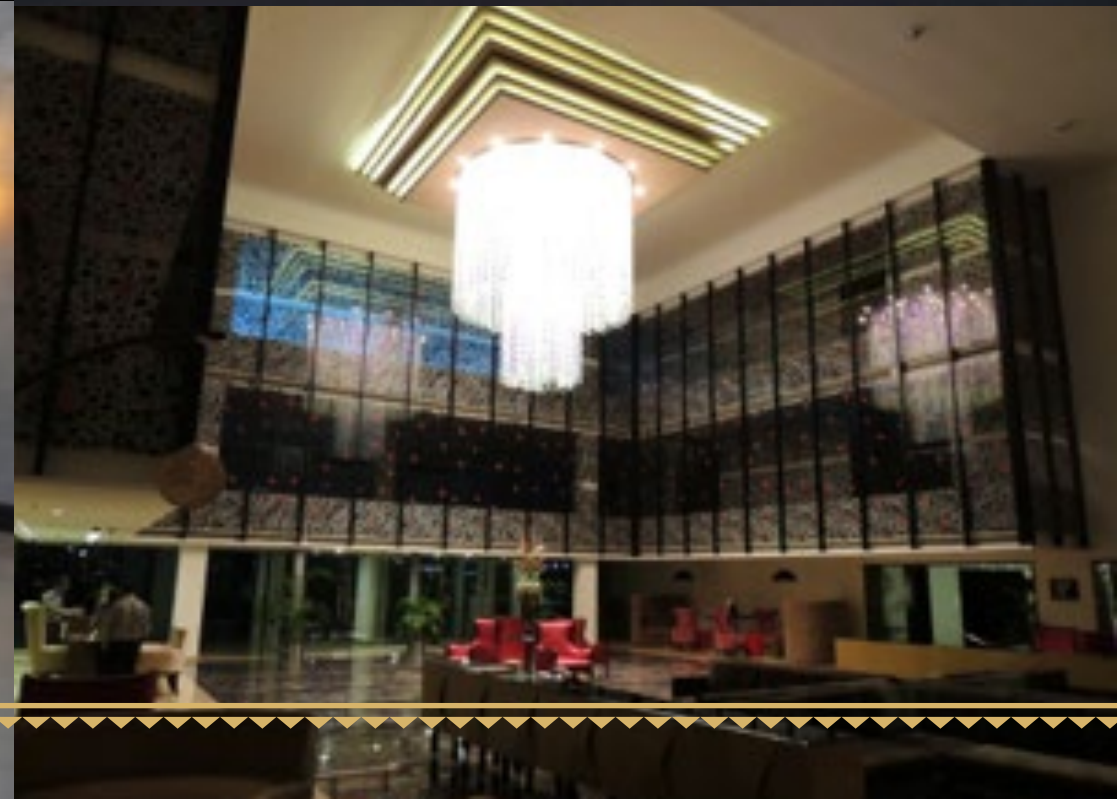


♥♦♦♦♦ 27 ROOM BOUTIQUE HOTEL ♦♦♦♦♥



THE DELTIN

HOTEL AND CASINO · DAMAN



OVERVIEW

- ◆ First 5 Star hotel in Daman
- ◆ Spread over 10 acres.

GAMING FACILITIES

- ◆ First proposed land based casino in Daman.
- ◆ 60,000 sq. ft. of gaming space.
- ◆ Expected to launch soon.



HOTEL, F&B & OTHER FACILITIES

- ◆ 176 all suite hotel rooms.
- ◆ 3 bars and 4 restaurants.
- ◆ 27,000 sq. ft. of indoor event (MICE space).
- ◆ 8,000 sq. ft. high end retail space.



SHAREHOLDING STRUCTURE



NRI's 1.09%

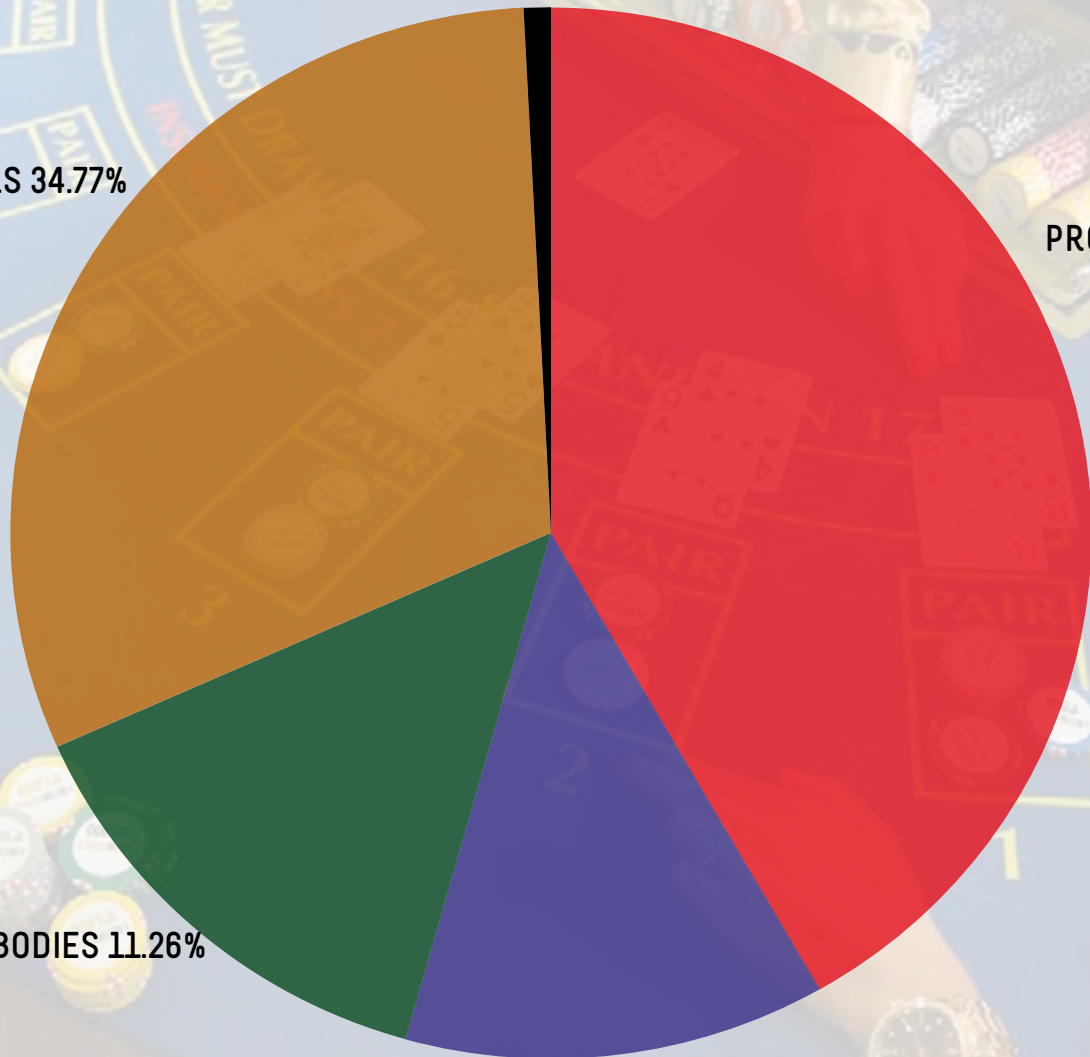
INDIVIDUAL SHAREHOLDERS 34.77%

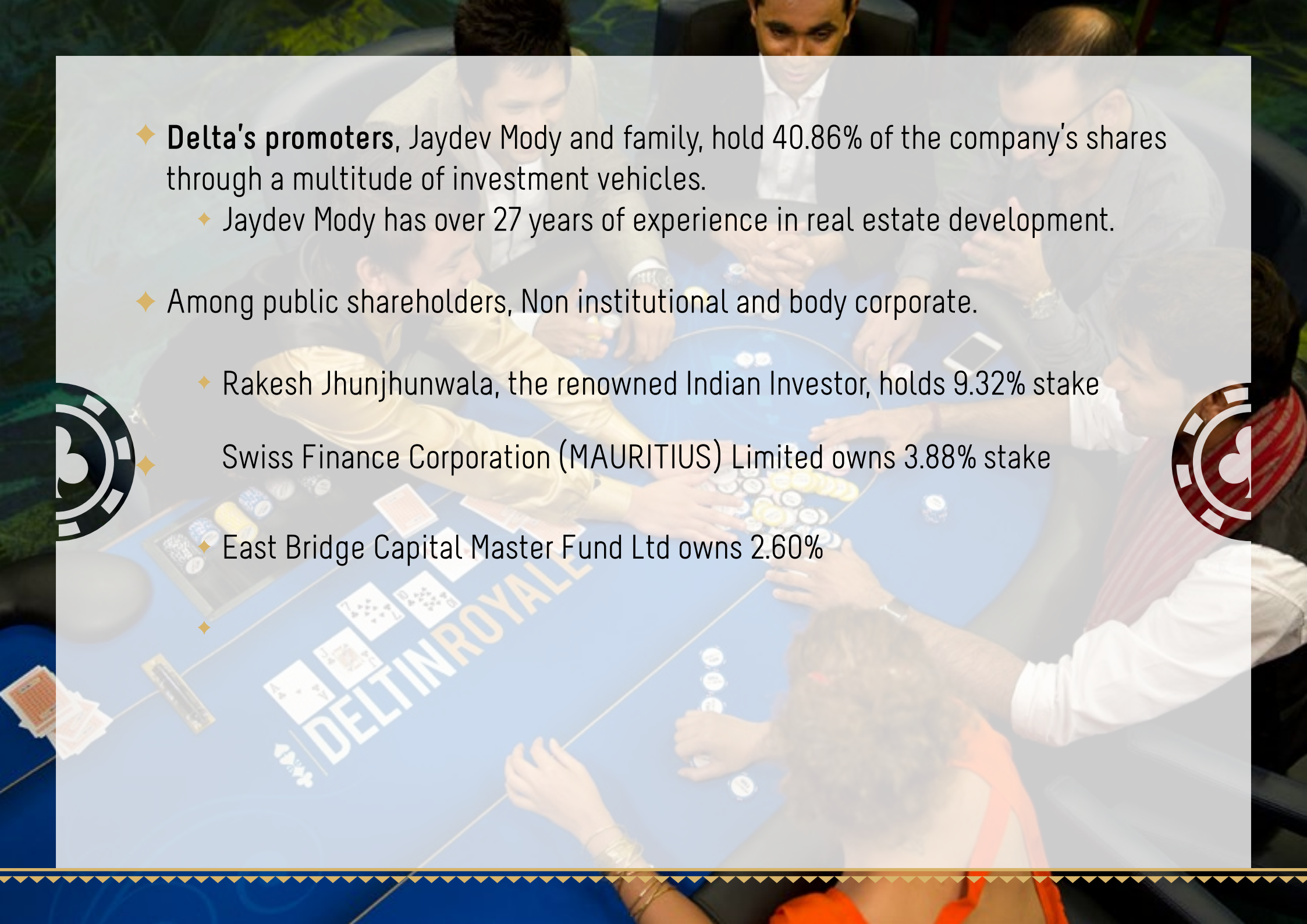
PROMOTERS 40.86%

CORPORATE BODIES 11.26%

INSTITUTIONS 12.02%

(As on 31st Dec 2015)



- 
- ◆ **Delta's promoters**, Jaydev Mody and family, hold 40.86% of the company's shares through a multitude of investment vehicles.
 - ◆ Jaydev Mody has over 27 years of experience in real estate development.
 - ◆ Among public shareholders, Non institutional and body corporate.
 - ◆ Rakesh Jhunjhunwala, the renowned Indian Investor, holds 9.32% stake
 - ◆ Swiss Finance Corporation (MAURITIUS) Limited owns 3.88% stake
 - ◆ East Bridge Capital Master Fund Ltd owns 2.60%



GAMING REVENUE & EBIT



Strong Financial Performance



Particulars (INR in Cr.)	Gaming			Consolidated
	Nine Months		12 months	12 months
	31 Dec 2015	31 Dec 2014	31 Mar 2015	31 Mar 2015
Total Income	242	193	268	300
Operating Exp	157	144	195	267
EBIT	85	49	73	33
% EBIT	35%	25%	27%	11%



THANK YOU

